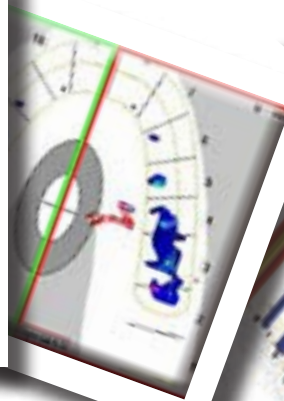


T-Scan[®] III - Bite Analysis System

A well-balanced bite protects your dental work.



This 3rd generation system features a consistent sampling speed of 100 Hz.

"We use the T-Scan everyday! There is no cosmetic case done in our office without checking their occlusion before starting, during temps and upon final insertion. We have reduced fracture and failures by utilizing this technology."

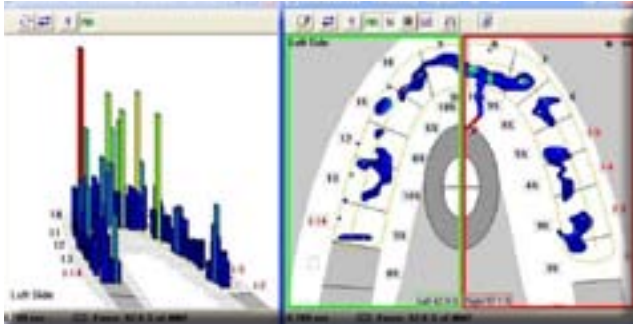
Clifford Williams, DMD
New York, NY

(800) BITE NOW
(800) 248 3669

Manufactured by:
307 West First Street, South Boston, MA 02127
Email: marketing@tekscan.com Web: www.tekscan.com



How it Works...



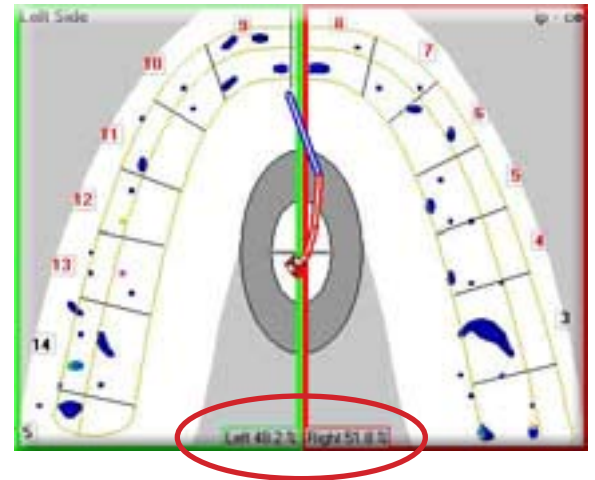
3-D and 2-D Display Windows

The ultra-thin, reusable sensor, shaped to fit the dental arch, inserts into the sensor handle, which connects into the USB port of your existing PC, making it easy to move from one operator to another. Evaluating occlusal forces is as simple as having a patient bite down on the sensor while the computer analyzes and displays timing and force data in 3-D or 2-D.

Applications:



- Fixed Prosthetics
- Removable Prosthetics
- Implant Prosthetics
- TMD Appliances
- **Occlusal Equilibration**
- Disclusion Time Reduction
- Abrasion Management
- Orthodontics
- **Locating Painful Teeth**
- Dental Case Finishing
- Occlusal Screening
- And Much More!



Balanced nearly 50% right to left

Benefits:

- Improved Clinical Results
- Differentiate your Practice
- Expand your Practice in a Wide Range of Applications
- Take Back Control
- Minimize Destructive Forces
- Determine Premature Contacts
- Instant Documentation/Built in Insurance Policy
- Enhanced Patient Comfort
- Save Time and Make Money

Our Benefits that Other Occlusal Indicators do not have:

- T-Scan is a quantitative vs. qualitative (*measurement of time and force*)
- Dynamic playback vs. static image
- Store meaningful data pre, mid, and post treatment

